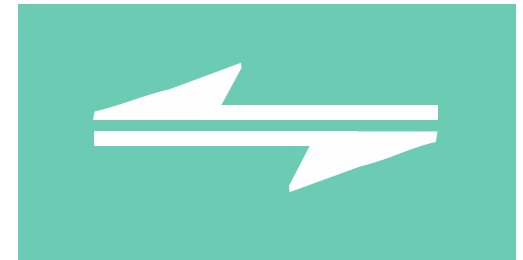
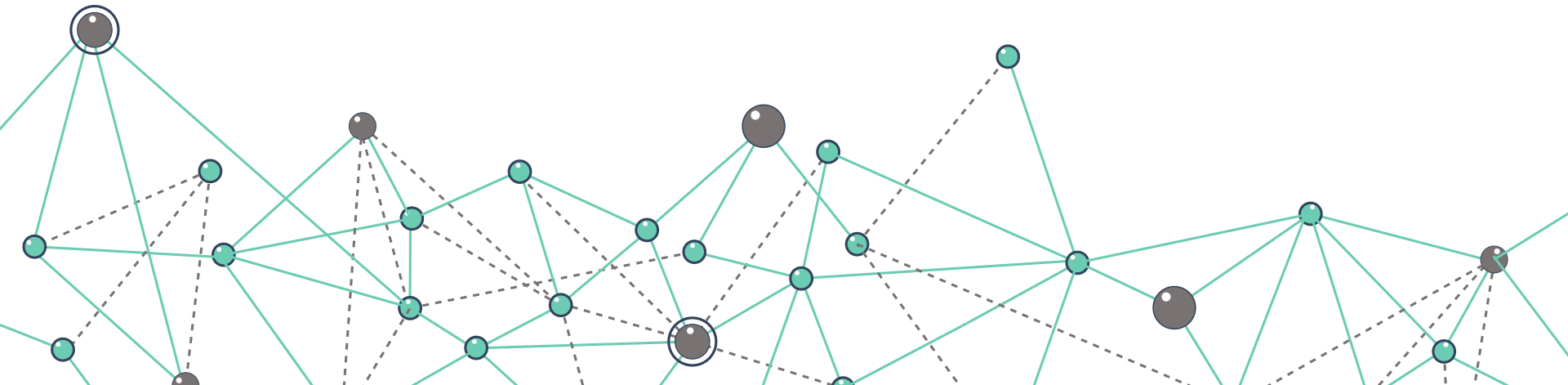


THE PUBLIC HEALTH COMMUNITY
PLATFORM



A solution for a modern public health
enterprise

March 4, 2015





Marcus Rennick

ASTHO, Informatics Director

Wayne Loschen

ISDS Member Representative, PHCP Steering Committee

Aaron Kite-Powell

Special Advisor, PHCP Steering Committee



TOPICS

- Vision/Mission/Strategic Map
- Community-driven Development through Steering Committee
- Current Progress and Next Steps
- Future State and Possibility



Community Development



DEVELOPMENT PROCESS



- Culture of Joint Development

- Key Elements
 - Stakeholders
 - Effective Governance
 - Transparency
 - Sustainability

- Project Selection
 - Needed
 - High Priority
 - Manageable Risks



Vision:

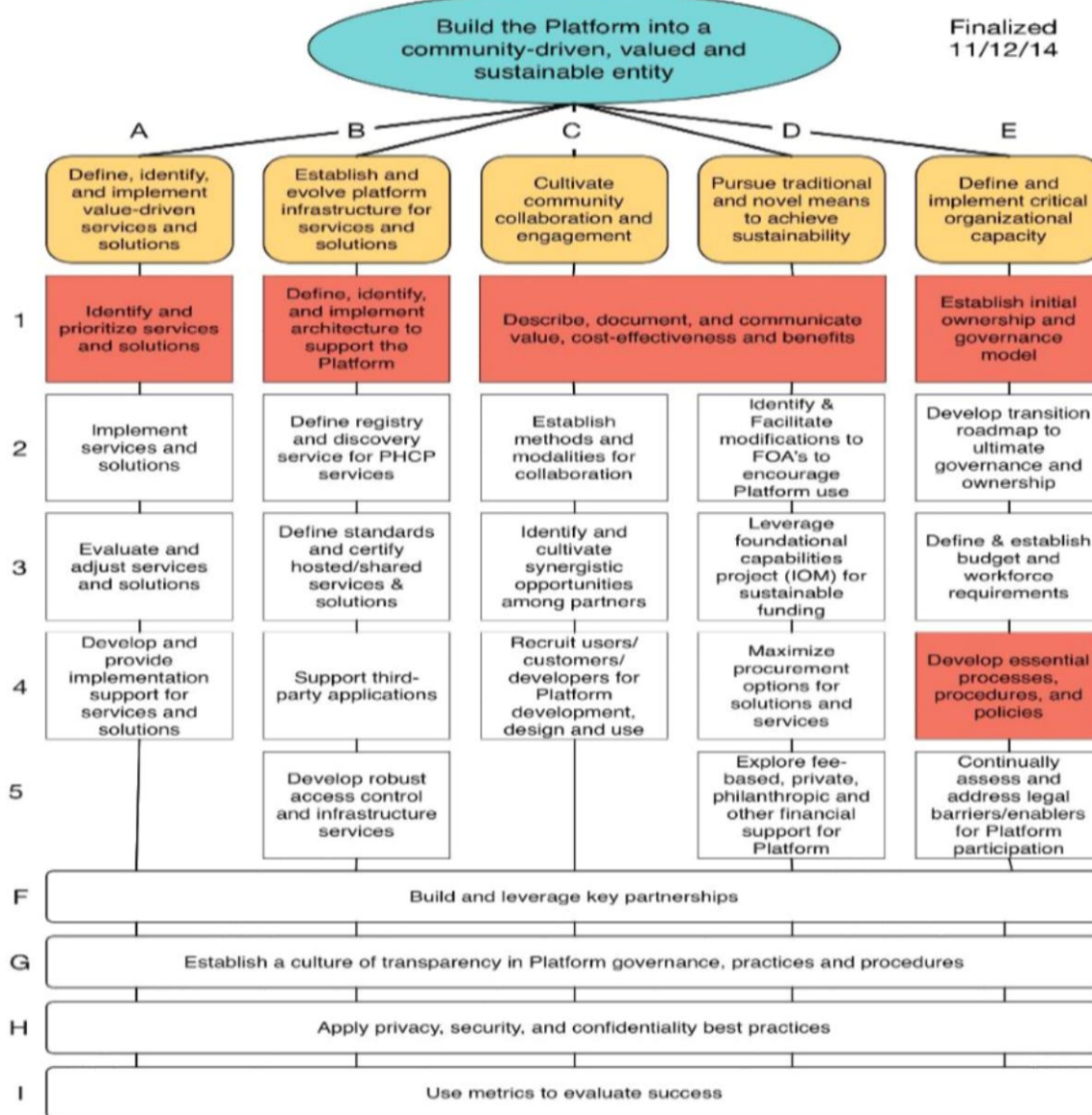
Universal access to modernized shared resources that efficiently, securely, and collaboratively transform data into action for a healthier nation.

Mission:

Provide an accessible, flexible, and secure public health information technology platform of interoperable shared solutions governed by and responsive to the public health community that enables user-driven development, implementation, collaboration, and effective use of resources to address public health priorities.

Public Health Community Platform Strategic Map 2014 - 2017

Finalized
11/12/14



■ = Prioritized objectives from October 2014

Steering Committee



Special Advisors

Bill Brand
Art Davidson

Roland Gamache
Bob Harmon

Aaron Kite-Powell
Elaine Lowery

Jim Pearsol
Dave Ross

Walter Suarez
Noam Arzt

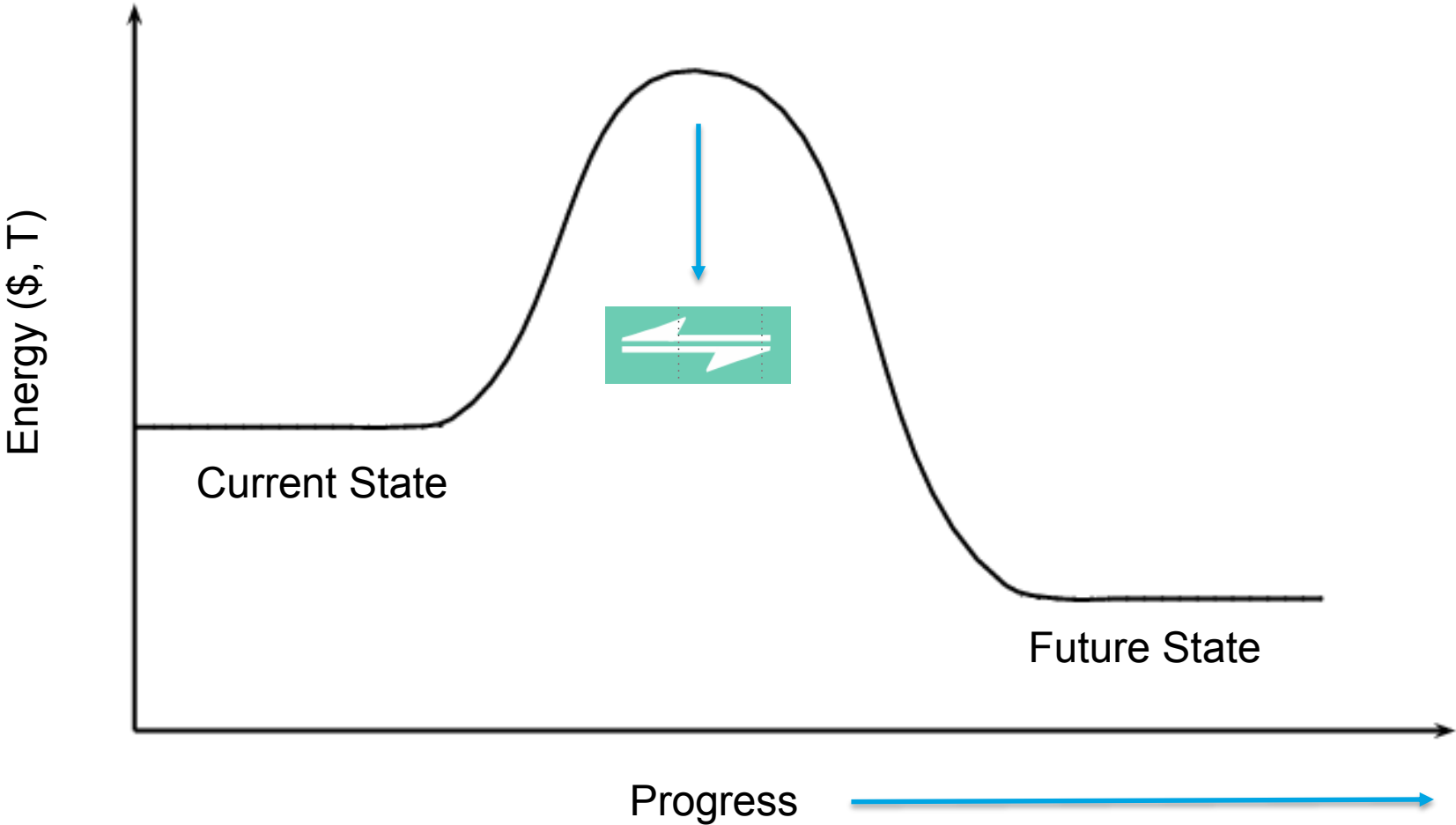
THE PUBLIC HEALTH COMMUNITY

PLATFORM





Current Progress





Develop Efficiencies



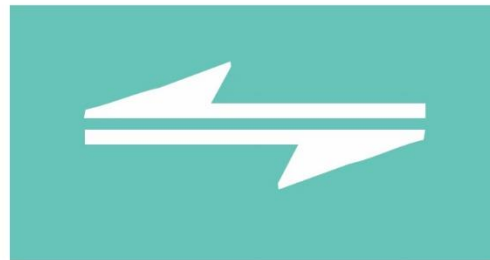
Build Capacity

Gain Capability





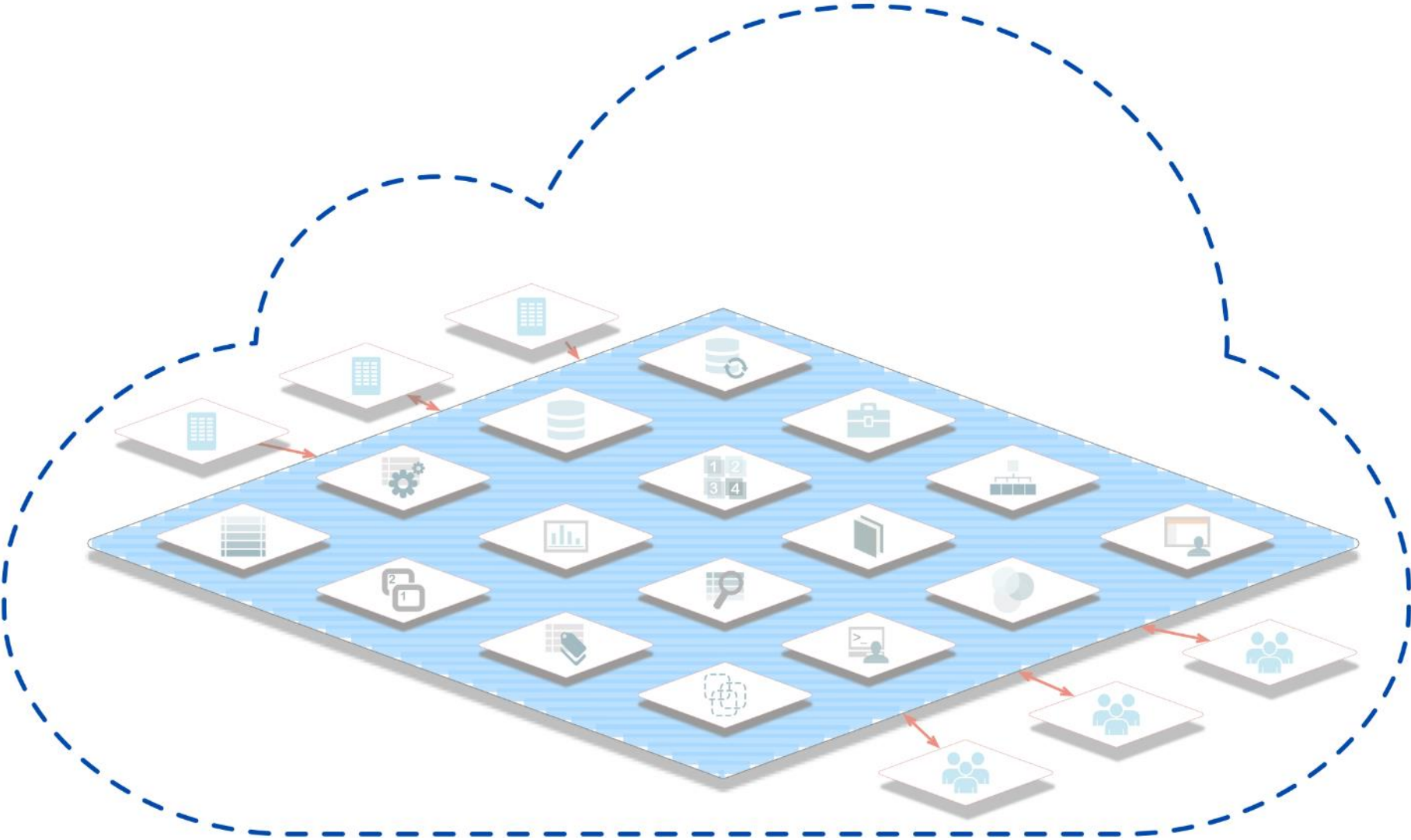
Develop
Efficiencies

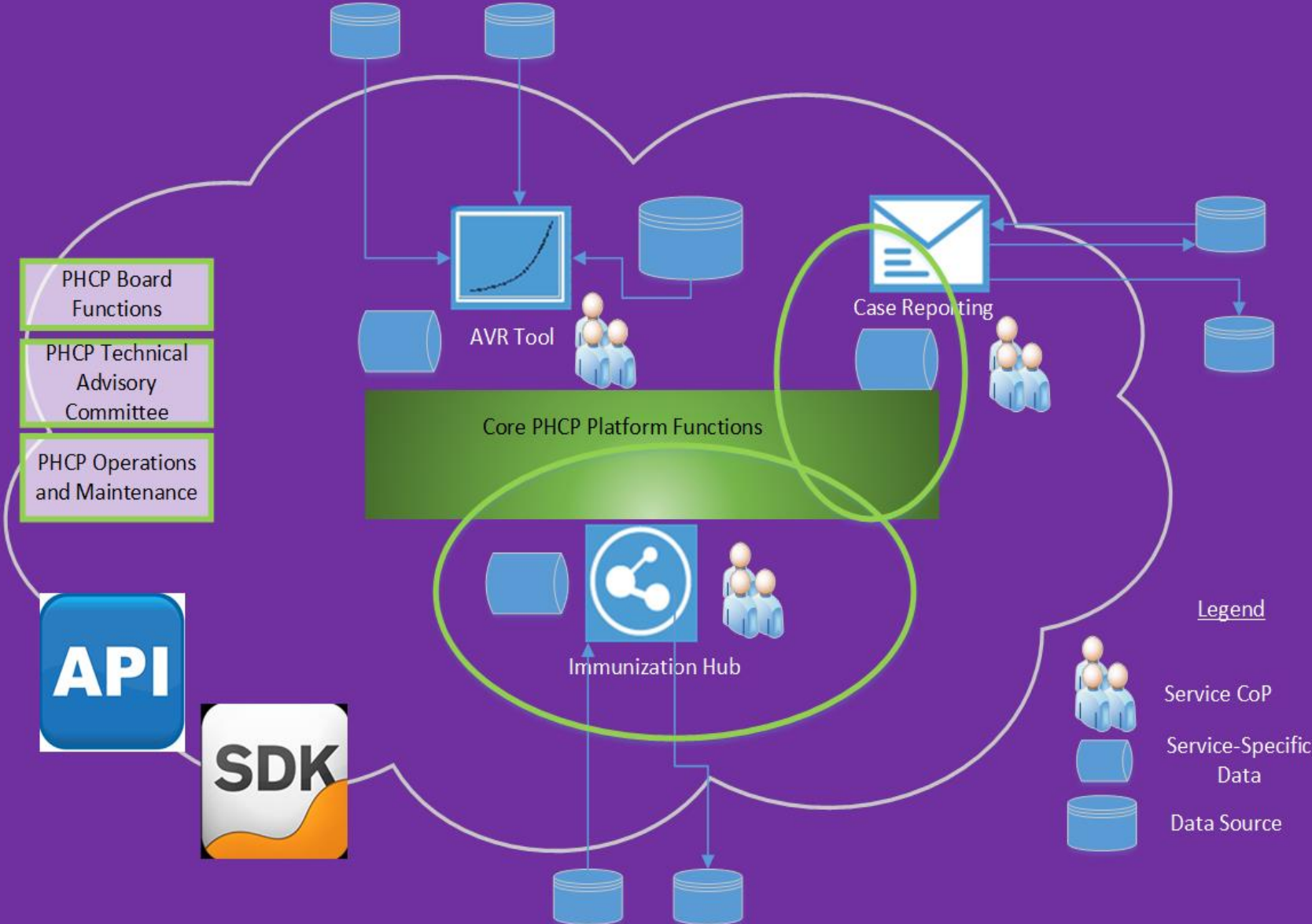


Build
Capacity

Gain
Capability







The Assessment Teams

Five teams were subcontracted to investigate the technical architecture, possible use cases, governance and sustainability, and a communication strategy.





ASSESSMENT TEAMS

- Technical Architecture: MIT Lincoln Lab
- Use Case: PHII (Immunization Decision Support, CHA Gap Analysis)
 APHL (ELR Reportable Disease Trigger)
- Governance: Clinovations
- Communications: Porter Novelli
- And the Steering Committee



SC GUIDING PRINCIPLES

- Plan Broadly, Implement Incrementally
- Maintain Community Ownership
- Provide a Positive Public Health Impact

Year 2

Pilots, Business, and Communication





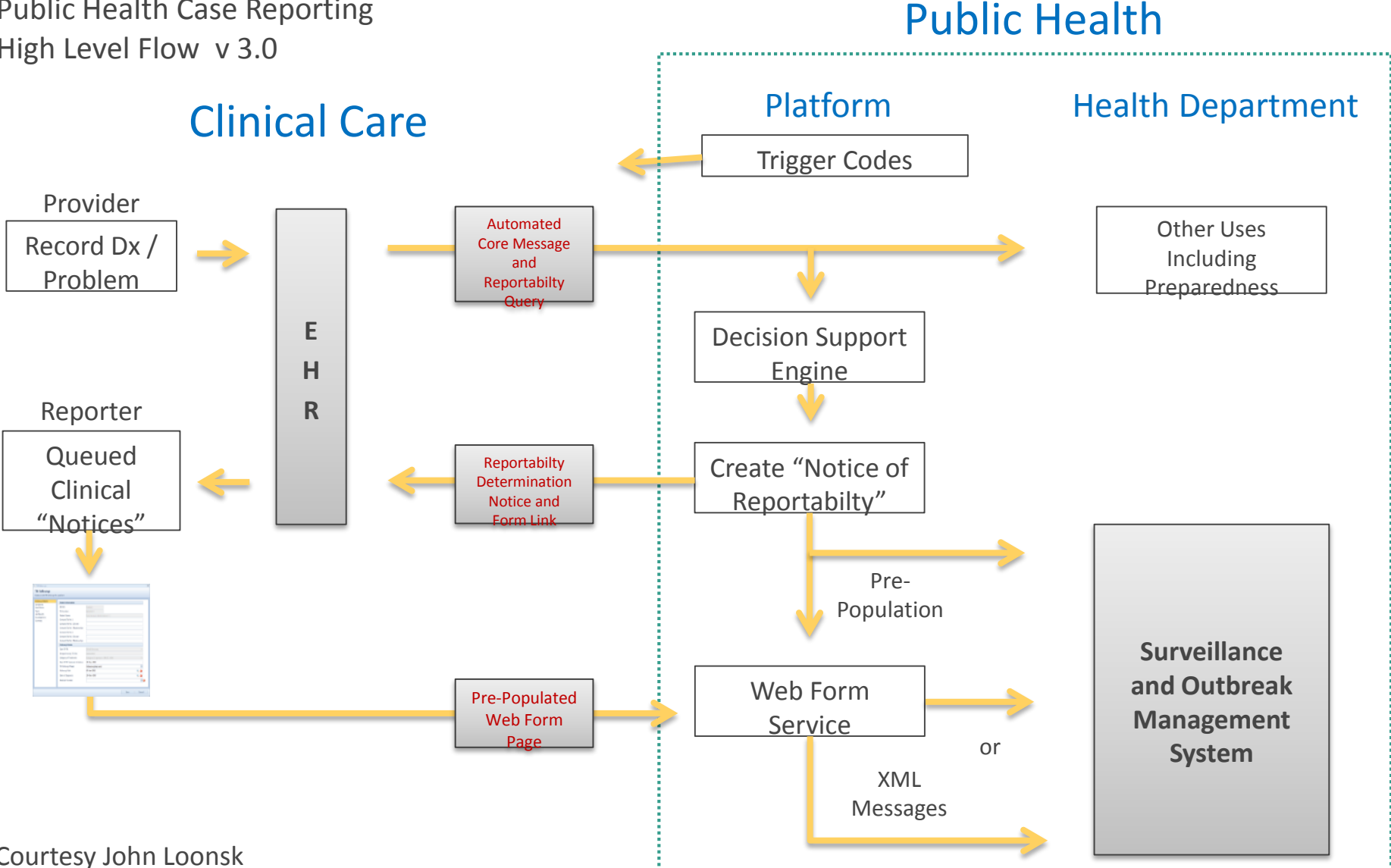
WORKGROUPS

- Case Reporting
- Immunization Hub
- Analysis & Visualization
- Governance
- Legal
- Communication

Case Reporting

Define, Identify, And Implement Value-Driven Services and Solutions

Public Health Case Reporting High Level Flow v 3.0



Courtesy John Loonsk



Immunization

Define, Identify,
And Implement
Value-Driven
Services and
Solutions

- Cross-domain work within ASTHO, AIRA, and ONC
- Solidifying the use case of data exchange between jurisdictions
 - How can this service be offered by the PHCP?
 - What are the technical/legal/business requirements to generalize the model?
 - How do the *service-specific* decision-making needs influence the overall *entity governance*?

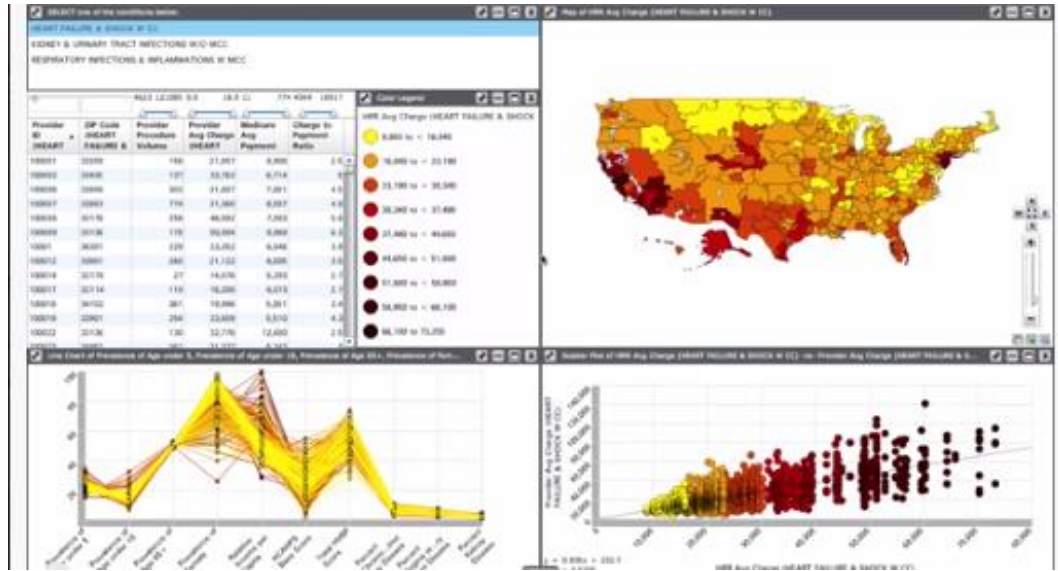
Cultivate
Community
Collaboration
and Engagement



Analysis and Visualization

**Define, Identify,
And Implement
Value-Driven
Services and
Solutions**

- Connecting multiple data types from open APIs to support Community Health Assessments
- Leveraging Weave development form UMass-Lowell
- Connecting to BRFSS data and healthindicators.gov



**Cultivate
Community
Collaboration
and Engagement**



ADDITIONAL PHCP DEVELOPMENT

- Transitioning to a representative decision making body.
 - ASTHO/NACCHO co-chairs, 5 at-large members
- Future work
 - Sustainability plan
 - Evaluation
 - Prioritization

Define and Implement Critical Organizational Capacity

Pursue Traditional and Novel Means to Achieve Sustainability

Cultivate Community Collaboration and Engagement



Establish and
Evolve Platform
Infrastructure for
Services and
Solutions

ADDITIONAL PHCP DEVELOPMENT

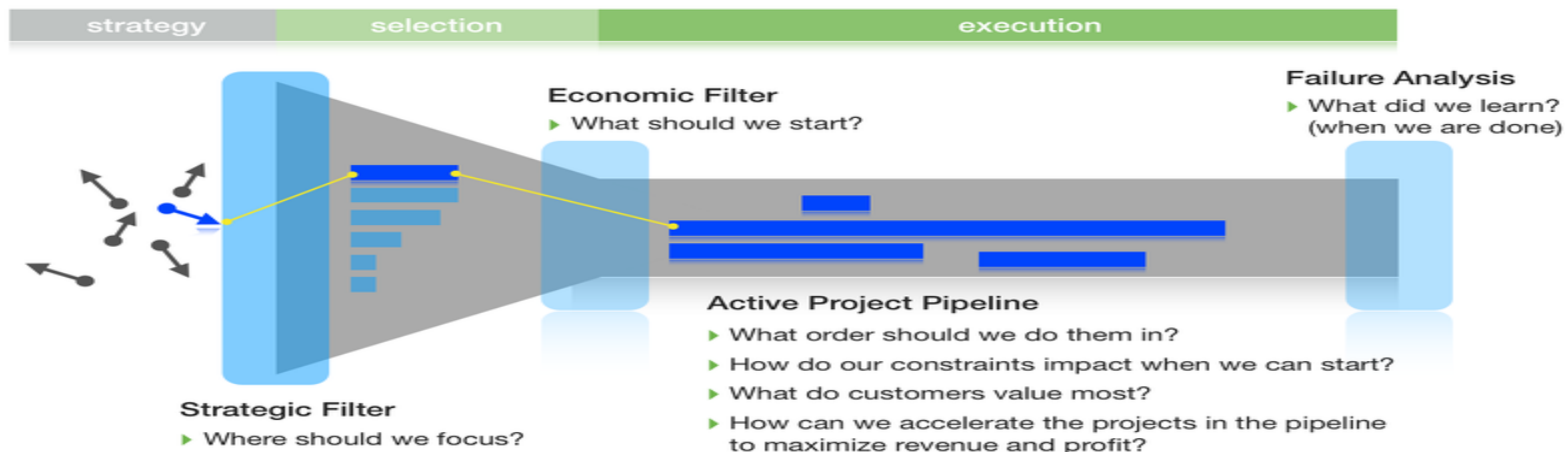
- Release RFI
 - Solicit information from industry leaders and SMEs to guide platform architecture development.
 - Based on initial user requirements
 - Results to inform RFP



**Define, Identify,
And Implement
Value-Driven
Services and
Solutions**

ADDITIONAL PHCP DEVELOPMENT

- Complete use case prioritization criteria.
 - Standardized form to collect information
 - Public Health priority?
 - Leverages platform architecture?
 - Extensible functionality?
 - Funded?
 - Develop process with IEC to weight, score, prioritize



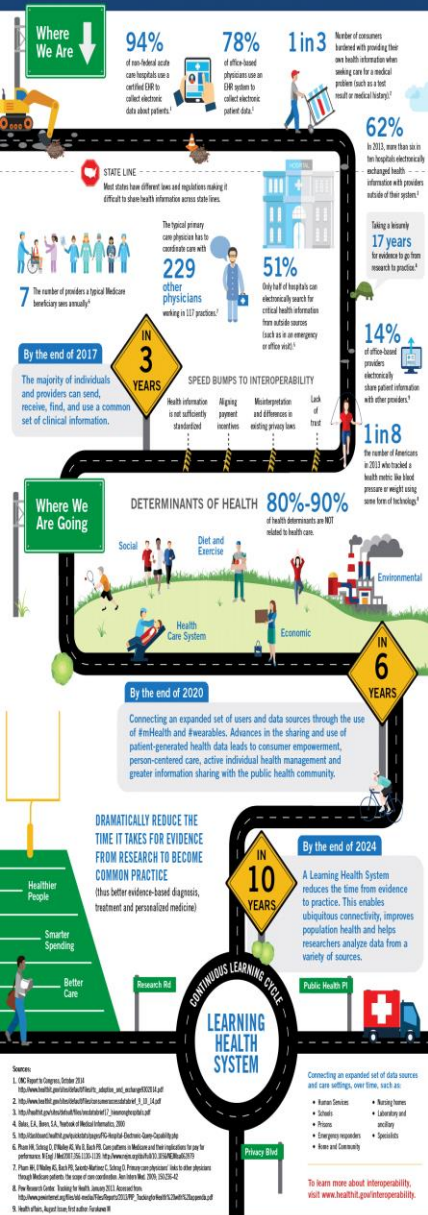
The background of the image consists of a dark gray surface with numerous concentric, overlapping ripples of varying sizes and brightness, creating a complex, textured pattern that resembles water ripples or a topographical map. The ripples are most prominent in the upper and middle sections of the frame.

National Priorities Alignment



Shared Nationwide Interoperability Roadmap: The Journey to Better Health and Care

The nation relies on Health IT to securely, efficiently and effectively share electronic health information with patient consent to achieve better care, smarter spending and healthier people. Interoperability will transform our health system from a static one to a learning health system that improves individual, community and population health.



THE LEARNING HEALTH SYSTEM

• is “...one in which progress in science, informatics, and care culture align to generate new knowledge as an ongoing, natural by-product of the care experience, and seamlessly refine and deliver best practices for continuous improvement in health and health care.”

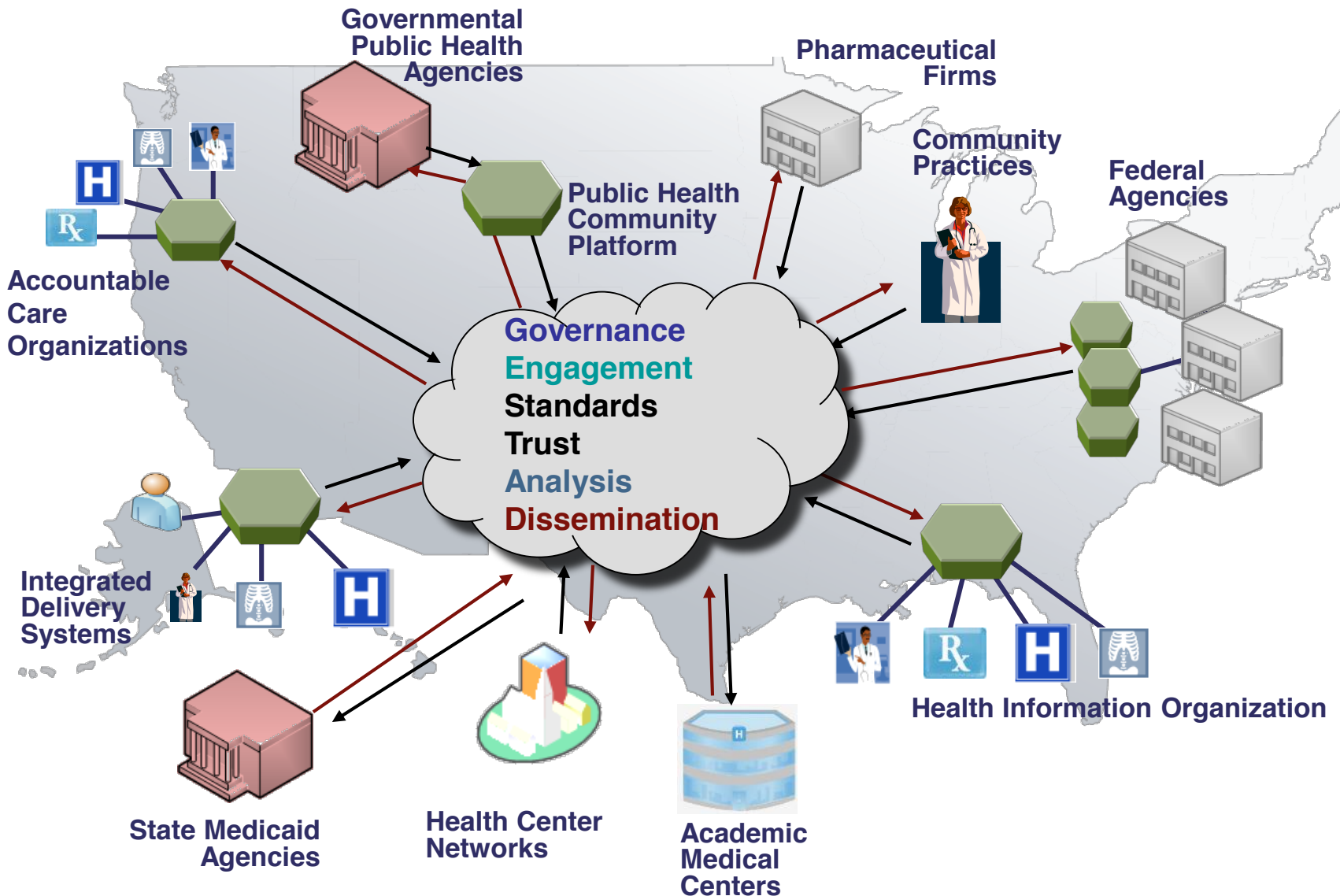
(Institute of Medicine)

- The end point of the ONC Interoperability Roadmap
 - Better care, smarter spending, healthier people
- Healthit.gov/interoperability



THE LEARNING HEALTH SYSTEM VISION

- A federated approach – not a centralized database
- Grounded in public trust and patient engagement
- Participatory governance
- An “Ultra Large Scale” System
 - “Just enough” standardization
 - Supports innovation around standards





LINKAGES BETWEEN LHS AND PHCP

- Alignment with standards and governance
- Help complete feedback loop from public health to clinical sector, especially for alerts and clinical decision support
- Link public health data to clinical and research data to gain new insights
- Provide services for both public health and community initiatives around assessment and planning



Future State



FUTURE STATE

- Meeting the challenges of engaging in the Learning Health System.
- Learning how to rapidly innovate and benefit from centralized development with federated deployment.
- A significant piece for public health to engage in the swiftly changing landscape.



CONTACT

www.ThePHCP.org
[@PHCommPlatform](https://twitter.com/PHCommPlatform)

Marcus Rennick

mrennick@astho.org